



A Jean-Yves Haymoz

Dominique Nanchen

RORATE CAELI DESUPER

A la manière de Maurice Duruflé

Choeur mixte SATB
violon, violoncelle et orgue

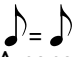
A Jean-Yves Haymoz

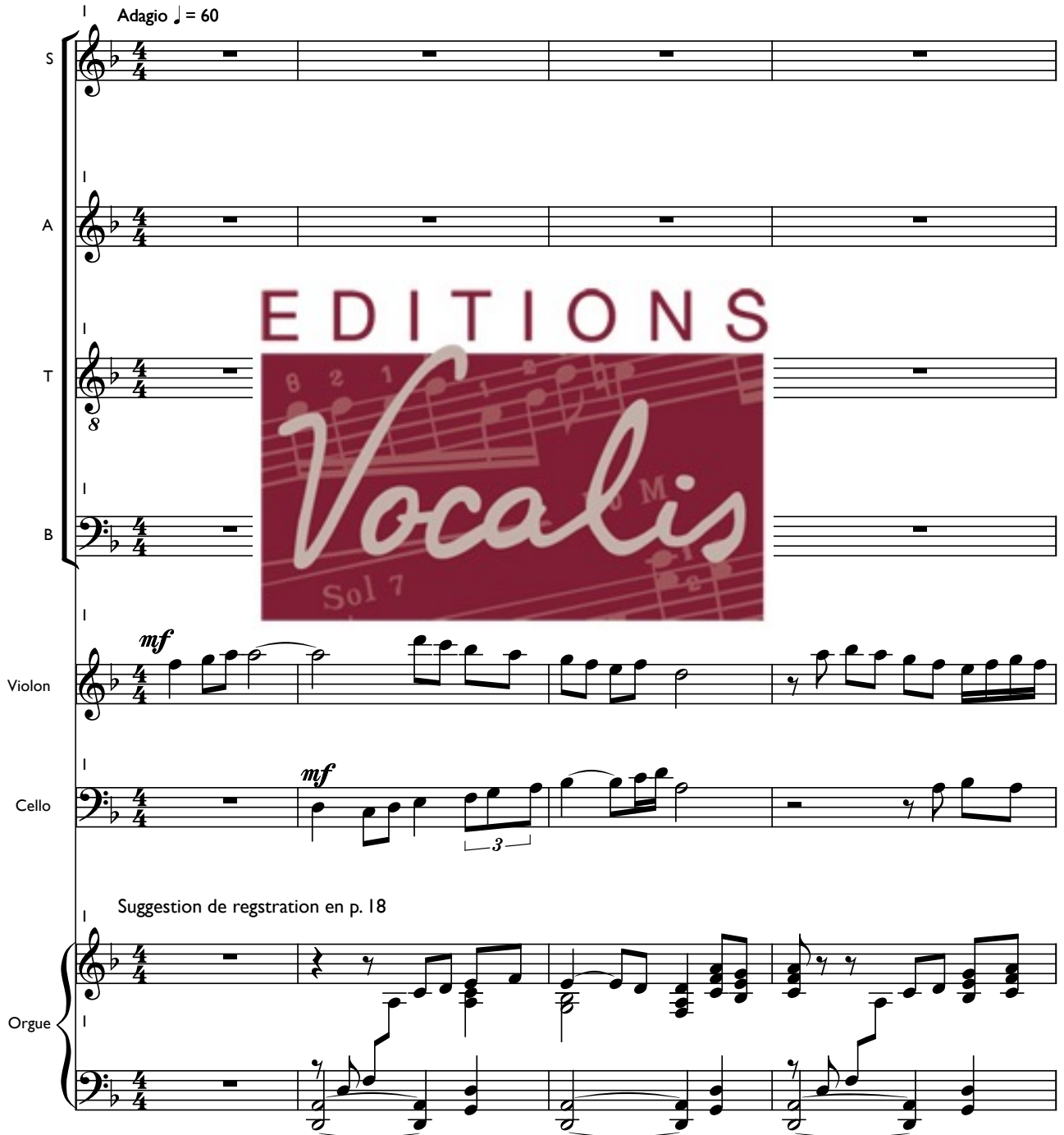
RORATE CAELI DESUPER

A la manière de Maurice Duruflé
Choeur mixte SATB, violon, violoncelle et orgue

Texte : Hymne pour le temps de l'Avent

Musique : Dominique Nanchen


Avec souplesse
Adagio ♩ = 60



EDITIONS
Vocalis
Sol 7

Soprano (S)
Alto (A)
Tenor (T)
Bass (B)

Violon (Violin) *mf*

Cello (Cello) *mf*

Orgue (Organ) Suggestion de registration en p. 18

5 *mp* Ro - ra - te, _____

5 *mp* Ro - ra - te, _____

5 *mf* - per _____ et

8

5 - per _____ et

5 *f*

5 *mp*

5

5

10 et plu - ant jus - tum.


10 et plu - ant jus - tum.

10 8 nu - bes plu - ant jus

10 nu - bes plu - ant jus

10 *mf*

10



15 *mp* ♩ = 60 18
Ro - ra - te

15 *mp* 18
Ro - ra - te —

15 *mp* 18
lo - ra - te —

8

15 18
lo - ra - te

15 18

15 18

15 18




19 *mf* cae · li de · su · per _____ Ro -

19 *mf* cae · li de · su · per _____ Ro -

19 *mf* cae · li de · su · per _____ Ro -

19 *mf* cae · li de · su · per _____ Ro -

19 *mp*



19

19

22

- ra - te cae - li de - su - per

22

- ra - te cae - li de - su - per

22

8 - ra - te

22

- ra - te

22

22

22

22

22

25 *f* Ro - ra - te cae - -

25 *f* Ro - ra - te cae - -

25 *f* e - -

25 e - -

25

25

EDITIONS
Vocalis
Sol 7

28

- - - li de - su - per et nu · bes

28

- - - li de - su - per, et nu · bes plu -

28

8

28

28

28

28

28

28

28

EDITIONS

Vocalis

Sol 7

8

Al Coda p. 17
(mesure 69)

31

plu - ant - jus - tum jus - tum jus - tum jus - tum.

31

- ant jus - tum jus - tum jus - tum.

31

8 - tum jus - tum.

31


et nu - tum jus - tum.

31

31

31

31



37 ♩ = 64 - 68

♩ = 60

Musical staff 1 (Treble clef) with measure numbers 37 and 38.

Musical staff 2 (Treble clef) with measure numbers 37 and 38.

Musical staff 3 (Treble clef) with measure numbers 37 and 38.

Musical staff 4 (Bass clef) with measure numbers 37 and 38. A large red watermark is overlaid on this staff.



Musical staff 5 (Treble clef) with measure numbers 37 and 38. The dynamic marking *mf* is present at the beginning.

Musical staff 6 (Bass clef) with measure numbers 37 and 38. The dynamic marking *mf* is present at the beginning.

Musical staff 7 (Treble clef) with measure numbers 37 and 38.

Musical staff 8 (Bass clef) with measure numbers 37 and 38.

42 *mp* $\text{♩} = 52$

Con · so · la - mi - ni, po · pu - le

42 *mp*

Con · so · la - mi - ni, po · pu - le

8

EDITIONS

Vocalis

Sol 7

42 *mf*

42 *mf*

47
me - us: ci - to ve - ni - et sa - lus tu - a.

47
me - us: ci - to ve - ni - et sa - lus tu - a.

47
8



47

47

47
3 3 3 3

47

47

51 *mp* Sal · va · bo te, no - li ti - me - re,

51 *mp* Sal · va · bo te, no - li ti - me - re,

51

8

51


51

51

51 *mf*

51

51



56 e - go e - nim sum Do - mi - nus De - us tu - us.

56 e - go e - nim sum Do - mi - nus De - us tu - us.

56

8

56

56

56

56

56

56

EDITIONS
Vocalis
Sol 7

60

♩ = 64 - 68

60

60

8

EDITIONS



60

mf

60

mf

60

60

Reprise p. 5 (mes. 18)

64 $\text{♩} = 60$ *mp* Ro -

64 *mp* Ro -

64 *mp* Ro -

8

64 *mp* Ro -


64

64

64

64

64

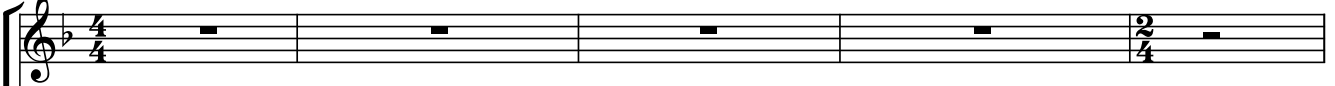


64

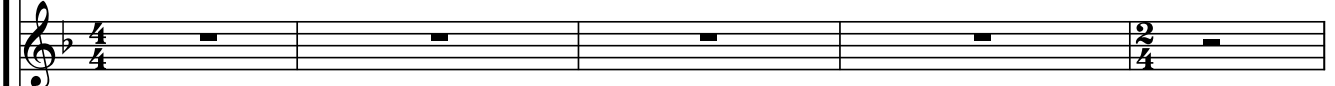
64

69

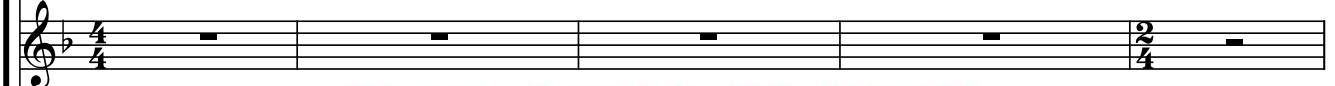
$\text{♩} = 60$



69



69



8

EDITIONS

69



69

mf



69

mf



69



69

